



BOW THEMES
We make Joomla better

BT FLOATING BANNER

User guide
Version 2.0



Table of Contents

| | |
|-------------------------------|---|
| Introduction | 2 |
| Related Topics | 2 |
| Product Features | 2 |
| Installing and Upgrading..... | 3 |
| System Requirement | 3 |
| Downloading | 3 |
| Manual Installation..... | 3 |
| Module Upgrading..... | 4 |
| Uninstalling | 5 |
| Setting | 6 |
| Global Setting | 6 |
| Advanced Options | 7 |
| Contacting Bowthemes | 8 |

Introduction

BT Floating Banner is simple and free module for Joomla 2.5, used to slide your banners or any modules (Menu, images, Banner, social icons...) from top to bottom (bottom to top) following scroll event.

Related Topics:

[Details](#)

[View Demo](#)

[Forum](#)

Product Features

Multi-setting

- Selectable any module for floating (Custom HTML, Menu, Social Icons, Banners...)
- Adjustable positions for floating (Top and Bottom).
- Adjustable speed/Stop floating
- Unlimited Menu modules

Administration

- Easy and friendly back-end administration.

Cross-browser support

- Compatible with Joomla 1.6, 1.7, Joomla 2.5 and almost all web browsers: Firefox2+, IE7+, Opera 9.5, Safari, Netscape, Google Chrome, Camino, Flock 0.7+.

Installing and Upgrading

System Requirement

| | |
|----------------------------|--|
| Server requirements | PHP 5.0 or above with GD library is enabled. Please follow this link to check it MySQL 5.0 or above Joomla 1.6.x or above; |
| Client requirements | Firefox 2.0.x, Internet Explorer 7 or above. |

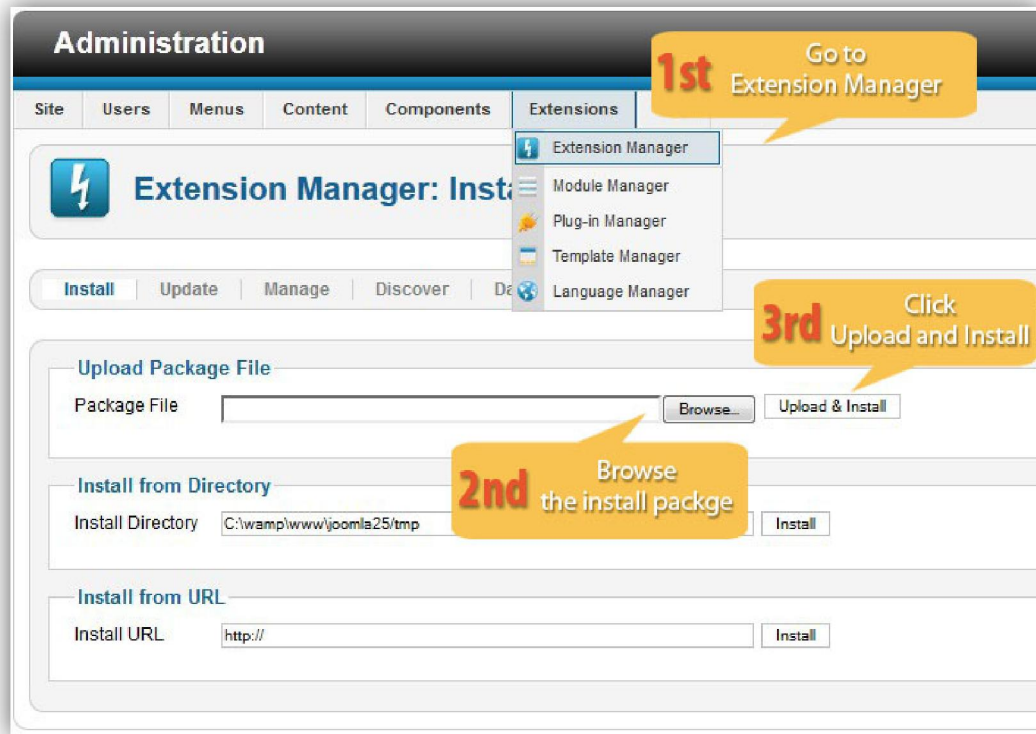
Downloading

BT Floating Banner is free extension. Please download [here](#).

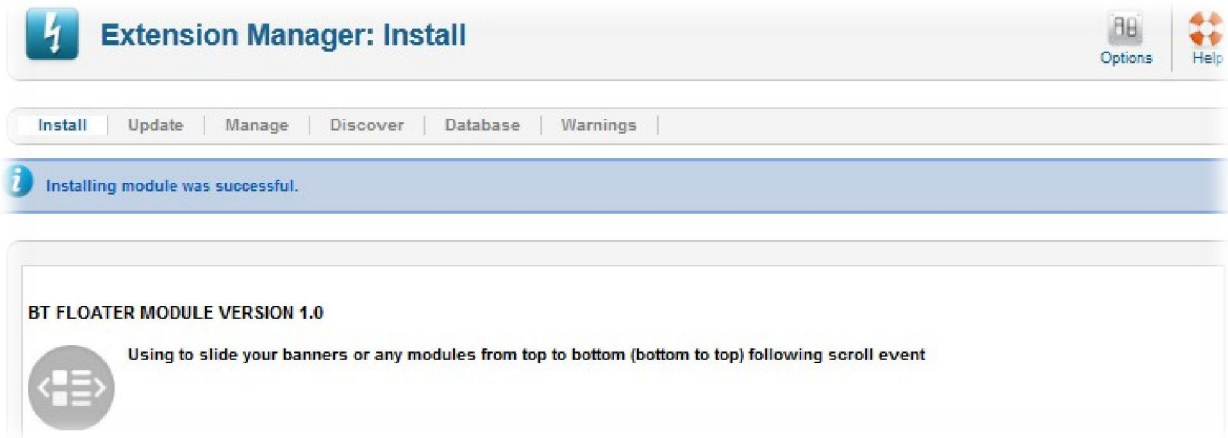
Manual Installation

Please follow these steps to install the product:

- Step 1: Go to Extension Manager
- Step 2: Browse the install package
- Step 3: Click "Upload & Install"



Illustrated image of successful installation:



Module Upgrading

Upgrading of this extension to newest version can be easily done by following again installation steps above. But we recommend you to back up your changes of source code and language files in this module before starting any upgrades.

Uninstalling

For uninstalling the product, please follow these steps:

Step 1: Go to “Extension Manager”

Step 2: Click to “Manage” tab

Step 3: Choose module style

Step 4: Mark checkbox of the module

Step 5: Click “Uninstall” button

Notice: In backend, the module is named BT Floater

The screenshot shows the Joomla! Administration interface. The top navigation bar includes 'Site', 'Users', 'Menus', 'Content', 'Components', 'Extensions', and 'Help'. The 'Extensions' menu is active, showing 'JAT3 Clean Cache', '3 Visitors', '10 Admins', '0', 'View Site', and 'Log c'. The main content area is titled 'Extension Manager: Manage' and includes a '1st' callout pointing to the 'Go to Extension Manager' button. Below this, there are buttons for 'Module', 'Disable', 'Refresh Cache', 'Uninstall', 'Options', and 'Help'. A '5th' callout points to the 'Uninstall' button. The 'Manage' tab is selected, and a '2nd' callout points to it. The 'Filter: BT' is set, and a '3rd' callout points to the 'Module' dropdown menu. The table below lists installed extensions, with a '4th' callout pointing to the checkbox for 'BT Floater'.

| <input type="checkbox"/> | Name | Location | Status | Type | Version | Published | Component Type | Folder | ID |
|--------------------------|-------------------|----------|--------|--------|---------|----------------|-------------------|--------|-------|
| <input type="checkbox"/> | BT Floater | Site | ✓ | Module | 1.0 | Apr 2012 | Bowthemes | N/A | 10088 |
| <input type="checkbox"/> | BT Floater | Site | ✓ | Module | 1.1.0 | Jun 2012 | BowThemes | N/A | 10087 |
| <input type="checkbox"/> | BT Floater | Site | ✓ | Module | 1.5 | December 2011 | Bowthemes | N/A | 10003 |
| <input type="checkbox"/> | BT Login | Site | ✓ | Module | 2.4.3 | April 2012 | BowThemes | N/A | 10047 |
| <input type="checkbox"/> | BT Product Slider | Site | ✓ | Module | 1.0 | September 2012 | www.bowthemes.com | N/A | 10007 |
| <input type="checkbox"/> | BT Product Slider | Site | ✓ | Module | 1.0 | September 2012 | www.bowthemes.com | N/A | 10006 |
| <input type="checkbox"/> | BT Login | Site | ✓ | Module | 2.4.3 | April 2012 | BowThemes | N/A | 10045 |
| <input type="checkbox"/> | BT Floater | Site | ✓ | Module | 1.0 | September 2012 | Bowthemes | N/A | 10002 |
| <input type="checkbox"/> | BT Floater | Site | ✓ | Module | 1.1.0 | Jun 2012 | BowThemes | N/A | 10001 |

Setting

Back-end access: Choose Extension Manager from the main menu. Click “Module Manager” and start searching the product by using keyword: “BT Floater” or using Joomla filter to quickly find.

The parameters are simple and divided into the following areas:

- Global Setting
- Advanced Options

Global Setting

Let's refer the detail setting in this section:

| | |
|--------------------|--|
| Modules | Choose one from all modules of the website to be displayed in BT Floating Banner |
| Module Side | Choose one side of the webpage to display the module. There are 02 options: Left and Right |
| X | Specify distance from the module to left or right side of webpage (“left” or “right” position depends on “Module Side”). Unit: Pixel |
| Y | Specify distance from the module to the top of web page. Unit: Pixel |



Advanced Options

▼ **ADVANCED OPTIONS**

Module Class Suffix

Caching ▼

Cache Time

| | |
|----------------------------|---|
| Module Class Suffix | Module will concatenate value of this parameter with string 'bt-facebookpage' to create a new CSS class for module. Example: 'bt-facebookpage_abc', module class suffix is '_abc' |
| Caching | Select whether you want to cache content of this module |
| Caching Time | Specify distance between each caching time. Unit: minute |

Contacting Bowthemes

All Bowthemes products include forum support, email support and ticket support. Please refer your membership package to select the compatible kind of support, as we may be able to solve the problem without delay.

Website: <http://bowthemes.com>

Forum support: <http://bowthemes.com/forums/25-bt-floating-banner/>

Email support: support@bowthemes.com

Ticket support: <http://bowthemes.com/submit-a-ticket>

If you encounter any issues with Bowthemes extensions and templates, email us at support@bowthemes.com and we will be happy to answer your questions.



This document is proprietary and confidential. No part of this document may be disclosed in any manner to a third party without the prior written consent of Bowthemes Team.