



**BOW THEMES**  
We make Joomla better

# BT Login – Joomla Extension

User guide  
Version 2.0

**LOGIN TO YOUR ACCOUNT**

Don't have an account yet? [Register now!](#)

Username \*

Password \*

Remember Me

**LOGIN**

- [Forgot your password?](#)
- [Forgot your username?](#)

Copyright © 2012 Bowthemes Inc. | [support@bowthemes.com](mailto:support@bowthemes.com)

## Table of Contents

Introduction .....	2
Related Topics.....	2
Product Features .....	2
Installing and Upgrading.....	3
System Requirement .....	3
Downloading.....	3
Manual Installation.....	3
Module Upgrading .....	4
Uninstalling .....	5
Setting.....	6
Basic Options.....	6
Advanced Options .....	10
Common Error Using Product .....	11
Javascript Error .....	11
Error in BT Arise.....	11
Contacting Bowthemes .....	12

# Introduction

---

**BT Login module is running alternatively with Joomla! Login module but have special styles associated and can be placed at various positions. You can also retain the standard login module in the default position. BT Login module is now available for J! 1.7 & 2.5**

**Related Topics:**

[Details](#)

[View Demo](#)

[Forum](#)

## Product Features

### Friendly-use

- Convenience: Ability to run at the same time with login module of Joomla.
- Integration with components such as: K2, JoomSocial, Community Builder, and other components. This means that you can:
  - Integrate any login and register module with BT Login is available.
  - Load any module to replace login form and load any webpage with its url to replace register form as iframe.
- Simplicity: Easy and friendly back-end administration

### Flexibility

- Appearance: with two styles Modal box and Dropdown box
- Position: allows user to open login/registration popup anywhere with click event. Using any id of HTML element to open login and register form is available.
- Redirection: allows user to choose redirect web page after Login or Logout

### Quick and Safe

- Quick: The module use AJAX to send all submitted data
- Safe: Google ReCaptcha is supported.

### Cross-browser support

- Compatible with Joomla 1.5, Joomla 2.5 and almost all web browsers: Firefox 3+, IE7+, Opera 9.5, Safari, Netscape, Google Chrome, Camino, Flock 0.7+.

# Installing and Upgrading

---

## System Requirement

<b>Server requirements</b>	PHP 5.0 or above with GD library is enabled. Please follow this <a href="#">link</a> to check it MySQL 5.0 or above Joomla 1.7.x or above;
<b>Client requirements</b>	Firefox 3.0.x, Internet Explorer 7 or above.

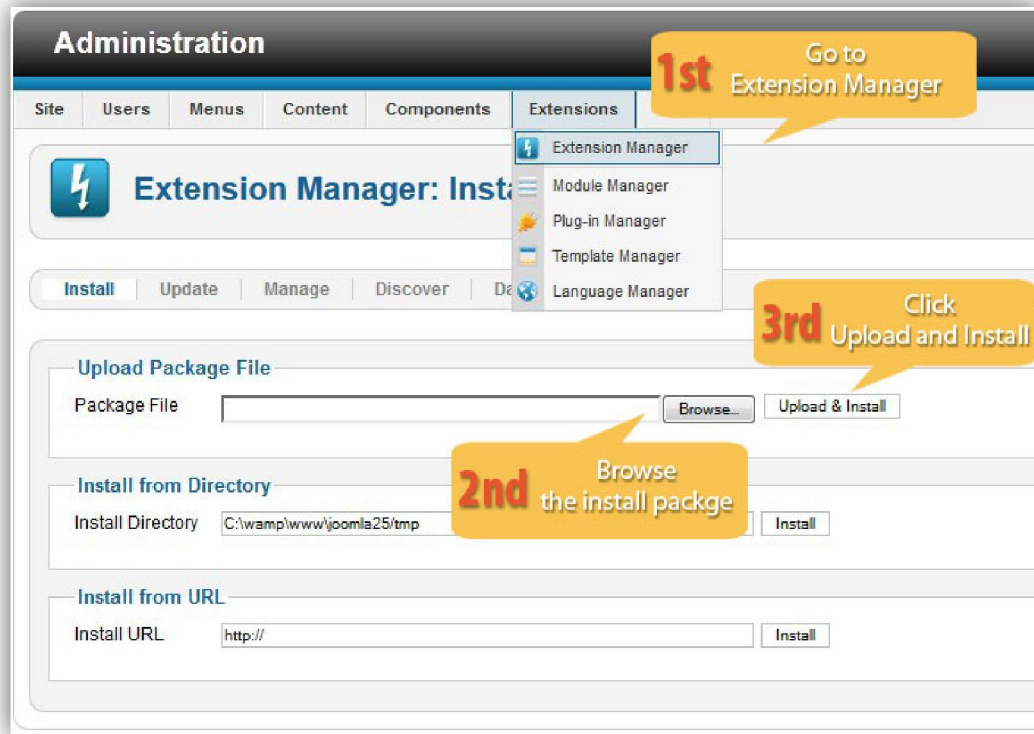
## Downloading

BT Login is a free extension. Please download it [here](#).

## Manual Installation

Please follow these steps to install the product:

- Step 1: Go to Extension Manager
- Step 2: Browse the install package
- Step 3: Click "Upload & Install"



Illustrated image of successful installation:



## Module Upgrading

Upgrading of this extension to newest version can be easily done by following again installation steps above. But we recommend you to back up your changes of source code and language files in this module before starting any upgrades.

## Uninstalling

For uninstalling the product, please follow these steps:

Step 1: Go to “Extension Manager”

Step 2: Click to “Manage” tab

Step 3: Choose module style

Step 4: Mark checkbox of the module

Step 5: Click “Uninstall” button

The screenshot shows the 'Extension Manager: Manage' interface. At the top, there are buttons for 'Enable', 'Disable', 'Refresh Cache', 'Uninstall', and 'Options'. A yellow callout labeled '1st' points to the 'Go to Extension Manager' button. Below this is a navigation bar with tabs for 'Install', 'Update', 'Manage', 'Discover', 'Database', and 'Warnings'. A yellow callout labeled '2nd' points to the 'Manage' tab. Below the navigation bar is a filter section with a 'Filter: BT' dropdown, a 'Clear' button, and a 'Hide protected extensions' checkbox. A yellow callout labeled '3rd' points to the 'Choose Component Type' dropdown menu. Below the filter section is a table of modules. A yellow callout labeled '4th' points to the checkbox of the 'BT Login' module. A yellow callout labeled '5th' points to the 'Uninstall' button in the top right corner.

<input type="checkbox"/>	Name	Location	Status	Type	Version	Date	Choose Component Type	Folder
<input type="checkbox"/>	BT Accordion Menu	Site	✓	Module	1.0	November 2011	Bowthemes	N/A
<input type="checkbox"/>	BT Background SlideShow	Site	✓	Module	2.1.3	Apr 2012	BowThemes	N/A
<input type="checkbox"/>	BT Content Showcase	Site	✓	Module	1.1	June 2012	www.bowthemes.com	N/A
<input type="checkbox"/>	BT Content Slider	Site	✓	Module	2.0.0	Sep 2011	www.bowthemes.com	N/A
<input type="checkbox"/>	BT Facebook LikeBox	Site	✓	Module	1.2	Oct 2011	Bowthemes	N/A
<input type="checkbox"/>	BT Flasher	Site	✓	Module	1.0	Apr 2012	Bowthemes	N/A
<input type="checkbox"/>	BT Login	Site	✓	Module	1.5	December 2011	Bowthemes	N/A
<input type="checkbox"/>	BT Login	Site	✓	Module	2.4.3	April 2012	BowThemes	N/A

# Setting

Back-end access: Choose Extension Manager from the main menu. Click “Module Manager” and start searching the product by using keyword: “BT Login” or using Joomla filter to quickly find.

The parameters are divided into the following areas:

- Basic Options
- Advance Options

## Basic Options

The screenshot shows the 'BASIC OPTIONS' configuration panel for the BT Login module. The panel is titled 'BASIC OPTIONS' and contains the following settings:

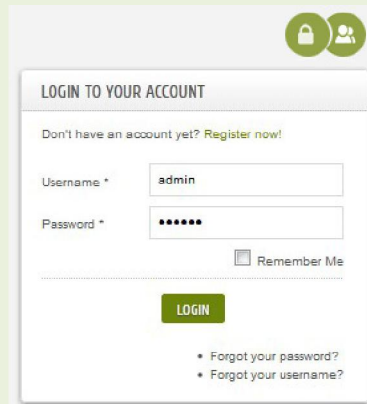
- Align option:** Right
- Display Type:** Dropdown
- Mouse event:** Click
- Login Redirection Page:** Default
- Logout Redirection Page:** Default
- Name/Username:** Username
- Log out button:** YES
- Registration tab:** YES
- Login tags:** (Empty text input)
- Registration tags:** (Empty text input)
- Bg button color:** (Empty text input)
- Text button color:** (Empty text input)
- Logged Modules:** User Menu x
- Logged Modules:** Select Some Options
- Integrated component:** None

Let's refer the detail setting in this section:

### Align Option

Align position of login and register buttons in relationship with the dropdown boxes

**Right:**



LOGIN TO YOUR ACCOUNT

Don't have an account yet? [Register now!](#)

Username \*

Password \*

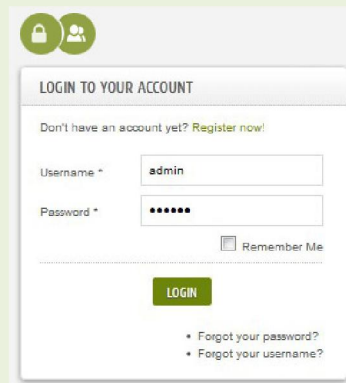
Remember Me

[LOGIN](#)

- [Forgot your password?](#)
- [Forgot your username?](#)

The login form is shown with the 'Remember Me' checkbox and the 'LOGIN' button aligned to the right side of the form.

**Left:**



LOGIN TO YOUR ACCOUNT

Don't have an account yet? [Register now!](#)

Username \*

Password \*

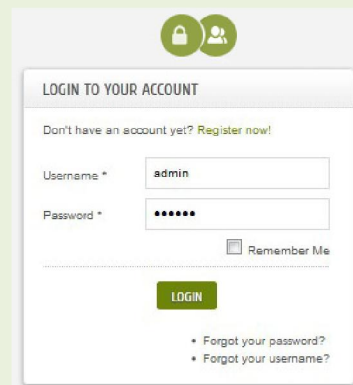
Remember Me

[LOGIN](#)

- [Forgot your password?](#)
- [Forgot your username?](#)

The login form is shown with the 'Remember Me' checkbox and the 'LOGIN' button aligned to the left side of the form.

**Center:**



LOGIN TO YOUR ACCOUNT

Don't have an account yet? [Register now!](#)

Username \*

Password \*


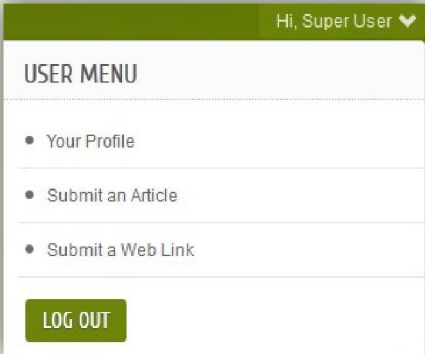
Remember Me

[LOGIN](#)

- [Forgot your password?](#)
- [Forgot your username?](#)

The login form is shown with the 'Remember Me' checkbox and the 'LOGIN' button centered horizontally within the form.



<b>Display Type</b>	Choose from two types: Dropdown box and Modal Box
<b>Mouse event</b>	Choose from two mouse events on the buttons to show boxes: Click or Hover (mouse over)
<b>Login Redirection Page</b>	Enter a link to which browser will redirect after a successful login. If no page was chosen, user will be redirected to Front Page.
<b>Logout Redirection Page</b>	Enter a link to which browser will redirect after a successful logout.
<b>Name/Username</b>	Choose Name or Username, which will be shown after login successfully
<b>Logout button</b>	<p>Select whether you want to show logout button when user logged in. Login button will be replaced by this button:</p>  <p>And while clicking on this button, a dropdown box appears. Content of this box can be a module or many module in a position. Please choose the module from two parameters: Logged modules and Logged Position. Module "User Menu" is default.</p> <p>So logout button will be shown in this box as below image:</p> 

<b>Registration tab</b>	Show/Hide register button
<b>Login tags</b>	Enter any <u>CSS selector</u> , including: HTML tag name, element's id or class. It will be used as login button and you can open login modal box from everywhere. Selectors must be separated by a comma.
<b>Registration tags</b>	Enter any <u>CSS selector</u> , including: HTML tag name, element's id or class. It will be used as login button and you can open registration modal box from everywhere. Selectors must be separated by a comma.
<b>Bg button color</b>	Select Background color of buttons. When you click on textbox a color picker will appear, please choose color here.
<b>Text button color</b>	Select color for button's text. A color picker will help you.
<b>Logged Modules</b>	After user logged in, there is a dropdown box with log out button. You can choose a module to display in this dropdown box.
<b>Logged Position</b>	Like Logged Modules, selected position to be showed in logout dropdown box.  (At version 2.4.3, this label is duplication of "Logged Modules")
<b>Integrated component</b>	With this parameter, you can choose a login module from other components which are installed on your site. The options are: <ul style="list-style-type: none"> <li>- None: Use original login module of Joomla</li> <li>- User Component: Use original login module</li> <li>- K2 Component: Use K2 login module</li> <li>- Joomsocial Component</li> </ul>

	<ul style="list-style-type: none"> <li>- Community Builder Component</li> <li>- Option: you can load any other modules. After selecting, two parameters: Option module and Option link will appear</li> </ul>
<b>Option module</b>	Choose a module from a list as login module
<b>Option link</b>	Type a URL of webpage to make it register page.

### Advanced Options

**▼ ADVANCED OPTIONS**

Load JQuery

---

Module Class Suffix

---

Caching

---

Cache Time

---

<b>Load JQuery</b>	Select whether you want to load JQuery library. "Auto" is recommended
<b>Module Class Suffix</b>	Module will concatenate value of this parameter with string 'mod_btlogin' to create a new CSS class for module. Example: 'mod_btlogin_abc', module class suffix is '_abc'
<b>Caching</b>	Select whether you want to cache content of this module

# Common Error Using Product

---

## Javascript Error

This error is coming frequently. The main reason here is that the website loads many JQuery files at the same time, or different javascript files are removed by plugins which manage javascript file. When this error is occurred, the module won't work well. Example:

- Unable to call login form
- After submit login data, browser will redirect to a white page with strange text

It's easy to check if you are used to Firebug add-on of Firefox or Inspect Element Window of Chrome. They will show you exactly the error.

\* Solution: Often turn off plug-in or load query feature of modules so as to just one jquery file is loaded.

## Error in BT Arise

BT Arise is our free template, many people are using it. And they often come across this error while upgrading BT Login. The reason of this error is that new version of BT Login don't suit current version of BT Arise. So you have to change a file of BT Arise to make the module work.

You can read this topic on our forum to fix problem.

<http://bowthemes.com/forums/topic/2048-bt-login-doesnt-work-on-bt-arise/>

## Contacting Bowthemes

---

All Bowthemes products include forum support, email support and ticket support. Please refer your membership package to select the compatible kind of support, as we may be able to solve the problem without delay.

Website: <http://bowthemes.com>

Forum support: <http://bowthemes.com/forums/13-bt-login/>

Email support: [support@bowthemes.com](mailto:support@bowthemes.com)

Ticket support: <http://bowthemes.com/submit-a-ticket>

If you encounter any issues with Bowthemes extensions and templates, email us at [support@bowthemes.com](mailto:support@bowthemes.com) and we will be happy to answer your questions.



This document is proprietary and confidential. No part of this document may be disclosed in any manner to a third party without the prior written consent of Bowthemes Team.